

TOP VALVE ^{* PAT}

Back Pressure & Pressure Relief Valves

Designed to Enhance the **ACCURACY** and **SAFETY** of Metering Pumps



Back Pressure/Anti-Siphon and Pressure Relief Valves

- Long life diaphragm
- Range to 350 PSIG
- Built-in air release and optional gauge port
- Available in PVC, CPVC, PVDF, polypropylene, Teflon, stainless steel, Alloy 20 and Hastelloy C
- 7 sizes (1/4" - 2" threaded, flanged or socket)
- Color coded handles indicate size at a glance
- High temperature valves available to (300°F/149°C)



Western Region

(08) 9412 6100

hydramet@hydramet.com.au

Central Region

(08) 8374 7800

hydrasa@hydramet.com.au

Eastern Region

(03) 9325 3900

hydravic@hydramet.com.au

Back Pressure/Anti-Siphon and Pressure Relief Valves

Description

This line of diaphragm style, back pressure/anti-siphon and pressure relief valves features a completely adjustable pressure range to 350 PSIG and a built-in air release to reduce priming difficulties. The valves are available in sizes from 1/4" through 2", eight materials of construction, offer a three year warranty and are available with socket weld, flanged or special threaded connections. High temperature to (300°F/149°C) valves are available. *CRN certification available. Please contact factory.*

Ordering Information e.g. Part # TVBP50-S/S-V-S

TV - B - P - 50 - S/S - V - S

TOP VALVE

Valve Type:

B = Backpressure
P = Pressure Relief
P2 = Pressure Relief (2 port)

Valve Style or Connection:

P = Backpressure, FNPT thr'd
R = Pressure Relief, FNPT thr'd
FW = Welded Flange
FT = Thr'd Companion Flanged
F = Flanged Non-Metallic
S = Socket
B = BSP thread
T = High Temperature (300°F/149°C)
H = High Pressure (to 350 psig)

Valve Port Connection Size:

25 = 1/4" 10 = 1"
45 = 1/4" X 1/2" 15 = 1 1/2"
50 = 1/2" 20 = 2"
75 = 3/4"

Standard Top: PVC/CPVC

Top Options:

A = Aluminum Top
S = 316L S/S Top
C = CPVC Top
P = Polycarbonate Top

Miscellaneous Options:

E = EPDM Diaphragm
P = PVC Diaphragm
V = Viton Diaphragm
G = Gauge Port

Body Material of Construction:

PVC = polyvinylchloride
CPVC = Corzan
PP = polypropylene
TFE = 24% glass filled Teflon
PVDF = polyvinylfluoride
S/S = 316L Stainless Steel
ALL20 = Alloy 20
Hast = Hastelloy C 276

Flow Rates

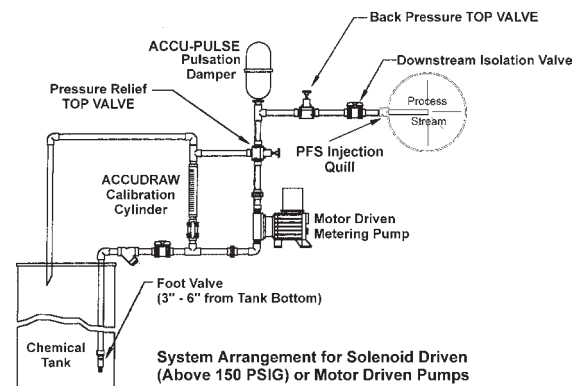
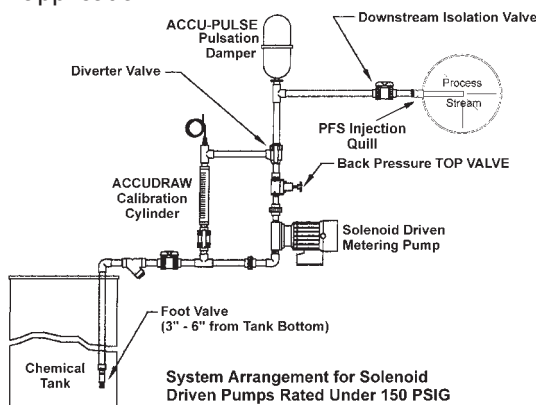
Flow capacity through TOP VALVE back pressure/anti-siphon and pressure relief valves under continuous flow conditions @ 50 PSIG with ambient temperature water.

Size	1/4"	1/4" / 1/2"	1/2"	3/4"	1"	1 1/2"	2"
Flow rate USGPM	4	4	6	8	14	25	40

Note: Capacities will increase with pressure. If pressure is doubled, flow rate will approximately double. For capacities of valves with pulsating flow, use approximately 1/3 of the given flow rates.

Typical Installations

The installations below are typical installation examples only. Consult your engineering department for the appropriate installation of your application



Western Region
(08) 9412 6100
hydramet@hydramet.com.au

Central Region
(08) 8374 7800
hydrasa@hydramet.com.au

Eastern Region
(03) 9325 3900
hydravic@hydramet.com.au