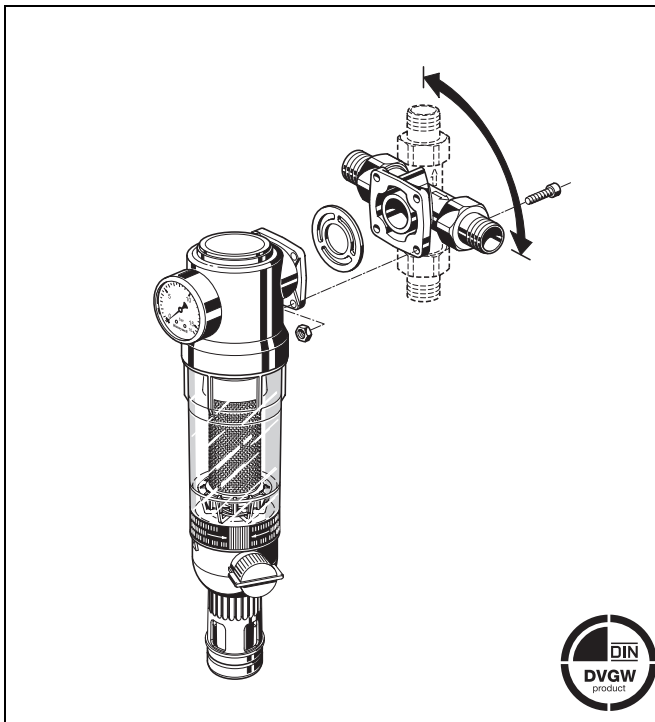


## F76CS/FN76CS

Reverse rinsing filter  
with clear filter bowl

### Product specification sheet



#### Construction

The fine filter comprises:

- Housing with pressure gauge
- Fine filter in clear filter bowl
- Rotatable connector piece (F76CS only)
- Ball valve with drain connection
- Double wing wrench

#### Materials

- Red bronze housing
- Red bronze connector piece
- Stainless steel fine filter
- Shock-resistant, clear transparent synthetic material filter bowl
- NBR seals

#### Application

F76CS/FN76CS reverse rinsing filters ensure a continuous supply of filtered water. The fine filter prevents the ingress of foreign bodies, for example rust particles, strands of hemp and grains of sand. The appliances correspond to the requirements of current DIN/DVGW specifications..

F76CS/FN76CS fine filters are especially suitable for retrofitting to, or upgrading of existing water systems. The rotatable connector piece enables the unit to be fitted where space is very restricted in either horizontal or vertical pipework.

#### Special Features

- DVGW-approval requested
- Double Spin Technology
  - Cartridge with external rotor enabling simultaneous cleaning in lower and upper filter areas
  - Visual function check possible
- Filtered water supplied even during reverse rinsing
- Patented reverse rinsing system - fast and thorough cleaning of the filter with small amount of water
- Memory ring indicates when next manual reverse rinsing is due
- Automatic reverse rinsing actuator with bayonet connector can be retrofitted
- Large filter surface
- Shock resistant clear synthetic material filter bowl enables easy checking of filter contamination
- Filter and complete filter bowl are replaceable
- With a retrofit D06FB pressure reducing valve, can be converted to a filter combination
- Standardised discharge connection
- Meets KTW recommendations for potable water

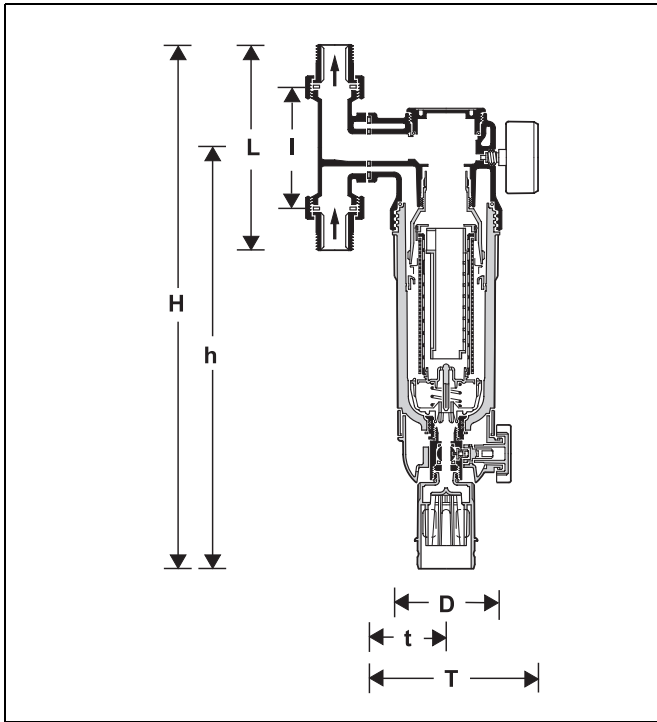
#### Range of Application

Medium Water

The filter is constructed for drinking water installations. In case of a process water application the filter has to be proven individually.

#### Technical Data

Installation position	Horizontal or vertical, with filter bowl downwards
Operating pressure	Minimum 1.5 bar Maximum 16.0 bar
Operating temperature	Maximum 40 °C with clear filter bowl
Connection size	3/4" - 1 1/4"



**Method of Operation**

The filter insert is divided into two parts. In the „filtering“ position, only the lower, larger section is rinsed through by water jets from outside to inside. The small upper section does not come in contact with unfiltered water. When the ball valve is opened for reverse rinsing, then the whole filter insert is pushed downwards until the water supply to the outer side of the main filter is stopped. Simultaneously, the water flow is opened to the upper part of the filter. The water needed for cleaning the filter passes through the upper filter section, then the rotating impeller and the main filter from inside to outside, i.e. the filter is reverse rinsed with filtered water. In that way the upper filter is also cleaned by jets from the impeller. The filter automatically switches back to the operating position when the ball valve is closed again.

Filters with Double Spin Technology have turbine blades which circulate the water and thereby set the rotor on the upper filter into a rotational motion. The internal impeller rinses off particles that have adhered to the upper filter at the intersecting points with the rotor.

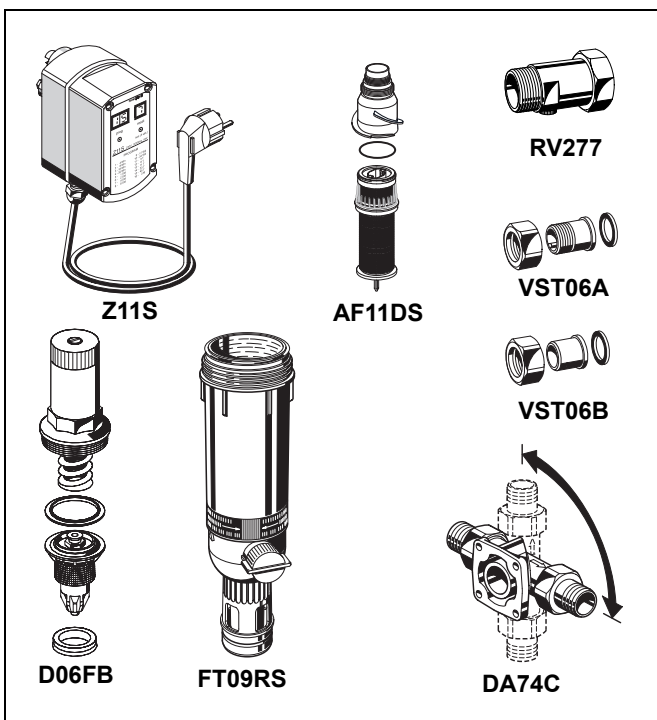
**Options**

- F76CS-...AA = Filter mesh size 100 µm, incl. rotatable connector piece DA74C with threaded male connections
- Connection size
- FN76CS-1A = Filter mesh size 100 µm; rotatable connector piece DA74C has to be ordered separately - see accessories

Connection size with DA74C	R	3/4"	1"	1 1/4"
Nominal size diameter	DN	20	25	32
Weight	ca. kg	3,7	3,8	3,9
Dimensions	mm			
	L	158	179	197
	l	90	100	105
	T	177	177	181
	t	95	95	99
	H	442	453	463
	h	363	363	363
	D	97	97	97
Flow value at Δp = 0.2 bar	m³/h	3,1	3,6	3,8
K <sub>VS</sub> -value		7,3	8,7	9,0
DIN/DVGW Approval No.		requested		

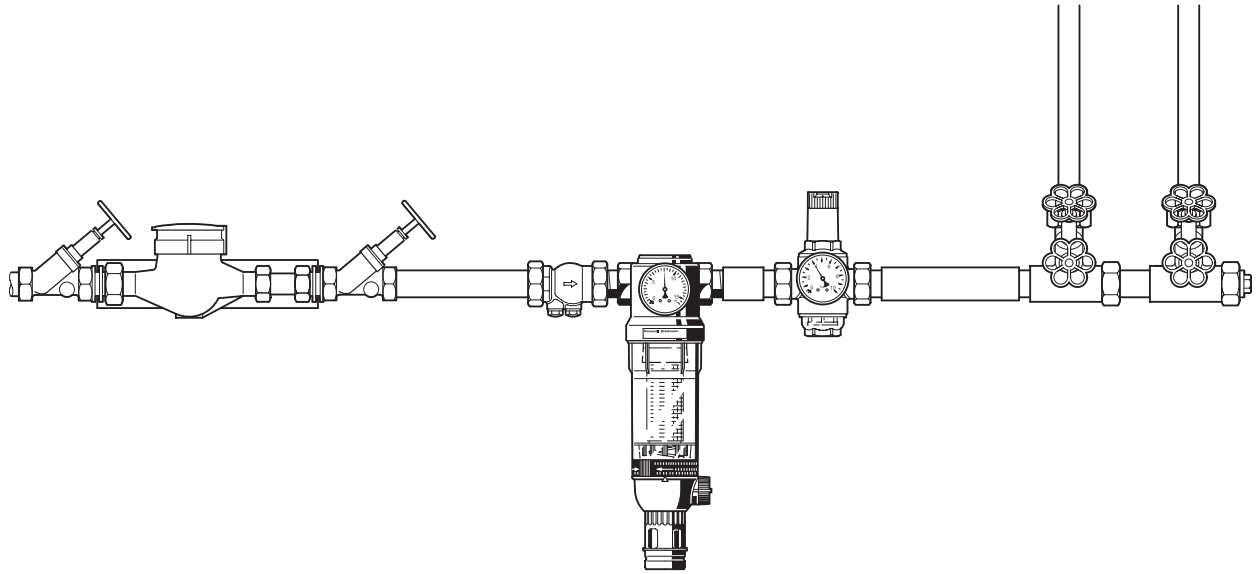
**Accessories**

- Z11S Automatic reverse rinsing actuator**  
For automatic filter cleaning at presettable intervals
- FT09RS Red-bronze filter bowl**  
For temperatures up to 70°C and operating pressures up to 25.0 bar
- D06FB Retrofit pressure reducing valve**  
For retrofitting to upgrade to a filter combination
- RV277 Inlet check valve**  
Available in sizes R<sup>1/2"</sup> - 2"
- VST06 Connection set**  
Connection set  
A = Threaded male connection;  
B = Solder union connection
- AF11DS Filter insert complete**  
Available with filter meshes 20 µm, 50 µm, 100 µm, 200 µm, 300 µm, 500 µm (for filters with Double Spin Technology)
- DA74C Rotatable connector piece**  
For connection of retrofit filters FN76CS.



\* The filter guide (either with double spin or without double spin feature) is included in the packaging of the replacement filter inserts (AF11DS and AF11S) only for the sizes 1/2" up to 1 1/4"

### Installation Example



### Installation Guidelines

- Install in horizontal or vertical pipework with filter bowl downwards
  - This position ensures optimum filter efficiency
- Install shutoff valves
  - Pressure gauge can be read off easily
  - Degree of contamination can be seen with clear filter bowl
  - Simplifies maintenance and inspection
- The installation location should be protected against frost
- Fit immediately after water meter
  - Corresponds to DIN 1988, Part 2

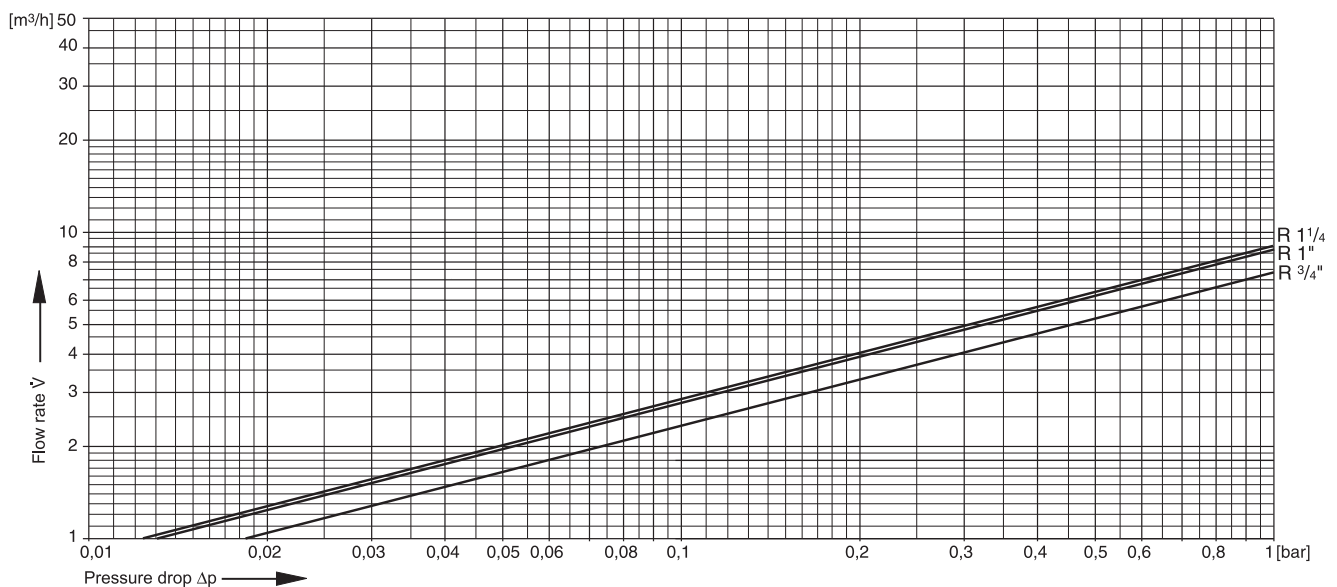
### Typical Applications

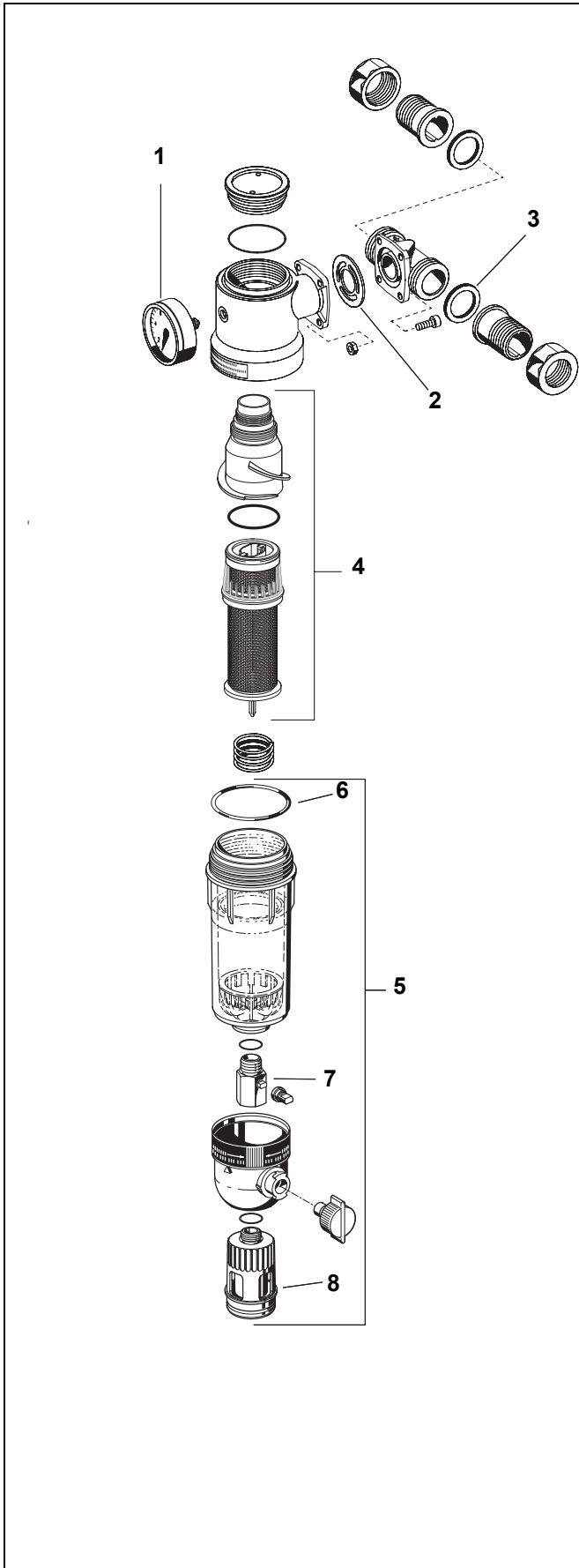
Fine filters of this type are suitable for supplies to buildings of all types. They can also be used for commercial and industrial applications within the limits of their specifications.

Fine filters of this type are installed:

- Where there is existing metal or plastics pipework
- For installation in horizontal or vertical pipework
- As replacement for an existing filter
- Where space is limited
- If the downstream system includes appliances which must be protected against dirt

### Flow Diagram





**Spare Parts**

**Filters F76CS/FN76CS (From 1997 onwards)**

<b>1</b>	Pressure gauge (0 - 16 bar)		M07M-A16
<b>2</b>	Flange seal	3/4" - 1 1/4"	5536400
<b>3</b>	Seal ring set (Pack of 10)	3/4" 1" 1 1/4"	0901444 0901445 0901446
<b>4</b>	Filter insert complete for filters with Double Spin Technology Filter mesh 100 µm	3/4" - 1 1/4"	AF11DS-1A
<b>5</b>	Clear filter bowl complete	3/4" - 1 1/4"	KF11S-1A
<b>6</b>	O-ring set (Pack of 10)	3/4" - 1 1/4"	0900747
<b>7</b>	Ball valve complete	3/4" - 1 1/4"	KH11S-1A
<b>8</b>	Drain connection	3/4" - 1 1/4"	AA76-1/2A
<b>9</b>	Double ring wrench for removing filter bowl (no fig.)	3/4" - 1 1/4"	ZR10K-3/4

\* The filter guide (either with double spin or without double spin feature) is included in the packaging of the replacement filter inserts (AF11DS and AF11S) only for the sizes 1/2" up to 1 1/4"!



**Western Region**  
(08) 9412 6100  
hydramet@hydramet.com.au

**Central Region**  
(08) 8374 7800  
hydrasa@hydramet.com.au

**Eastern Region**  
(03) 9325 3900  
hydravic@hydramet.com.au

[www.hydramet.com.au](http://www.hydramet.com.au)