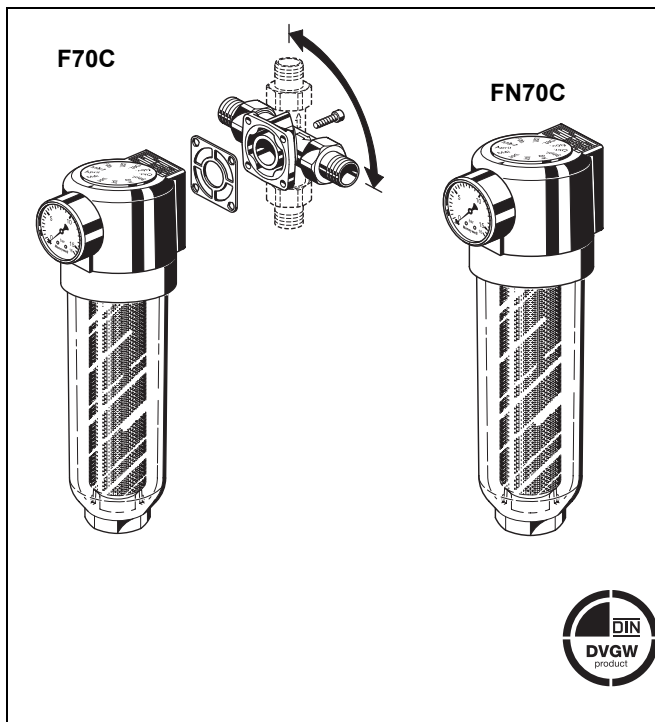


F70C/FN70C

Fine filter

Product specification sheet



Construction

The fine filter comprises:

- Housing with pressure gauge
- Rotatable connector piece (F70C only)
- Fine filter in clear filter bowl
- Double wing wrench

Materials

- High quality synthetic material housing
- Red bronze connector piece (F70C only)
- Stainless steel fine filter
- Shock-resistant, clear transparent synthetic material filter bowl
- NBR seals

Application

F70C/FN70C filters ensure a continuous supply of filtered water. The fine filter prevents the ingress of foreign bodies, for example rust particles, strands of hemp and grains of sand.

F70C/FN70C fine filters are used in systems where an existing pressure reducing valve is fitted or where one is not required. Both horizontal and vertical installation is possible.

Special Features

- DIN/DVGW approved
- Memory ring indicates time when next replacement of filter is due
- Large filter surface
- Shock resistant clear synthetic material filter bowl enables easy checking of filter contamination
- Filter and complete filter bowl are replaceable
- Meets KTW recommendations for potable water

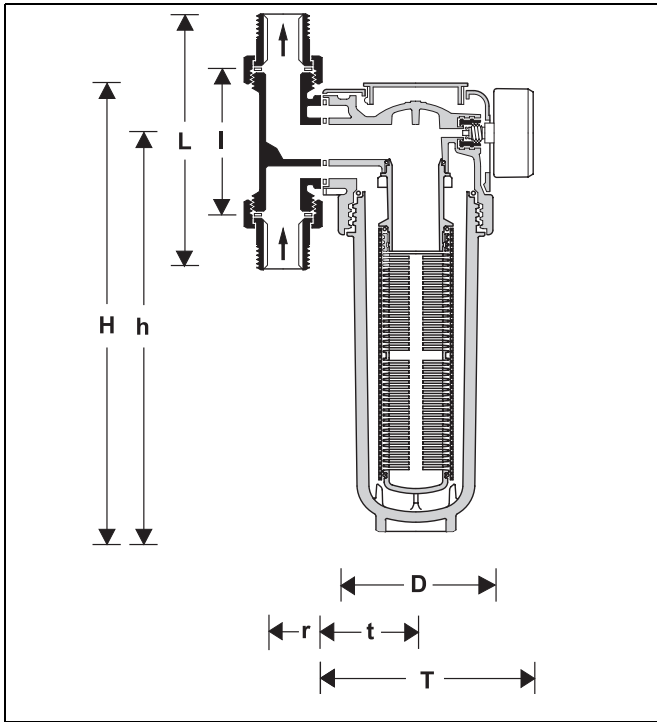
Range of Application

Medium Water

The filter is constructed for drinking water installations. In case of a process water application the filter has to be proven individually.

Technical Data

Installation position	Vertical or horizontal, with filter bowl downwards
Operating pressure	Maximum 16.0 bar
Operating temperature	Maximum 30 °C
Connection size	3/4", 1", 1 1/4"



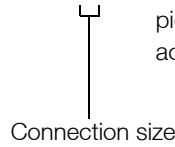
Method of Operation

Water flows through the filter mesh from outside to inside and this traps dirt particles on the outer face of the filter. For reasons of hygiene, the filter insert must be replaced at no longer than six monthly intervals. Where dirt is constantly present it is recommended that the unit be converted to a reverse rinsing filter F74C/FN74C.

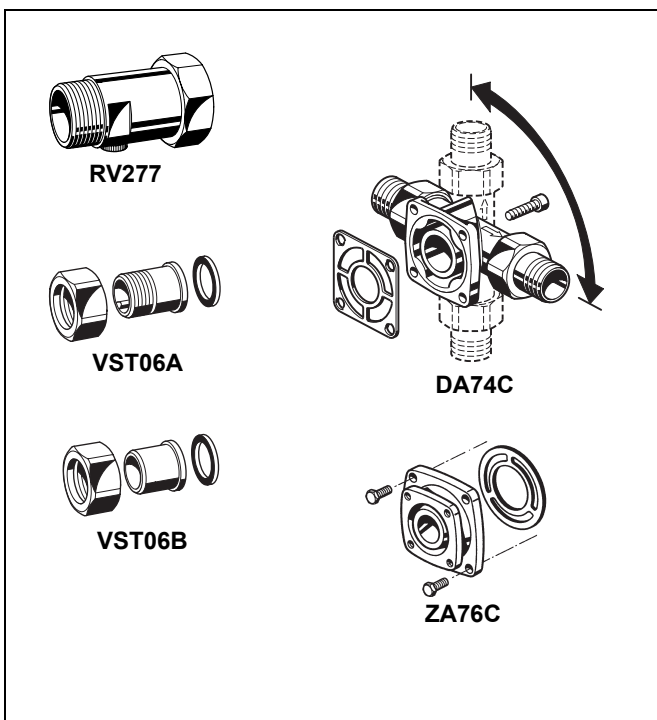
Options

F70C-...A = Filter mesh size 100 µm, incl. rotatable connector piece DA74C with threaded male connections

FN70C-...A = Filter mesh size 100 µm; rotatable connector piece DA74C has to be ordered separately - see accessories



Connection size DA74C	R	3/4"	1"	1 1/4"
Weight	approx. kg	2.7	3.2	3.6
Dimensions	mm			
	H	294	294	294
	h	256	256	256
	T	150	150	150
	t	66	66	66
	r	27	27	31
	D	105	105	105
	l	90	100	105
	L	162	184	203
Flow value at Δp = 0.2 bar	m ³ /h	4.2	4.6	5.4
k _{vs} -value		9.9	10.8	12.5
DIN/DVGW Approval No.		NW-9301 BO 0222		



Accessories

RV277 Inlet check valve

Available in sizes R¹/₂" - 2"

DA74C Rotatable connector piece

For connection of retrofit filters and filter combinations

VST06-B Connection set

Solder connections

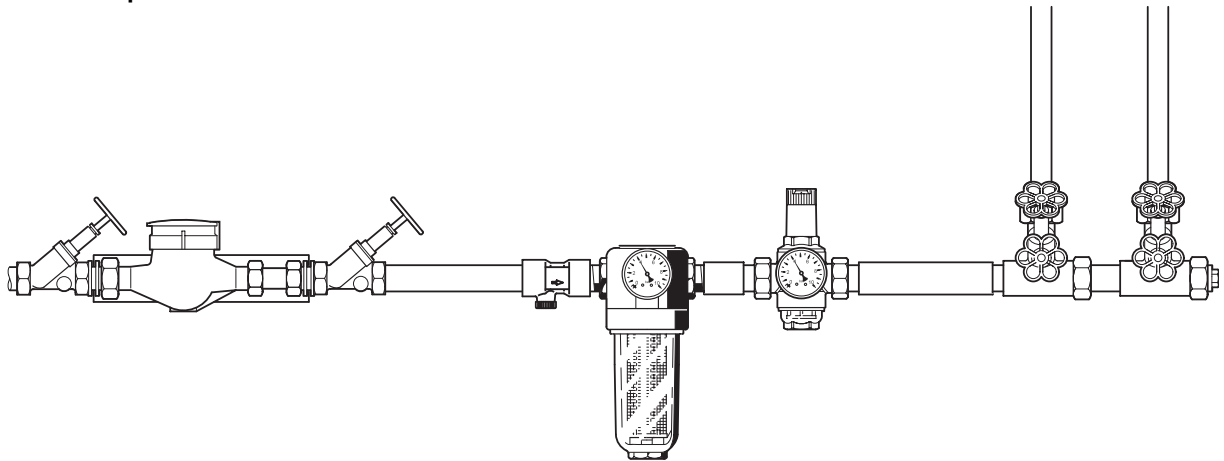
VST06-A Connection set

Threaded connections

ZA76C Connector piece

For conversion of the fine filters with rotatable connector pieces (1 1/4" and 1 1/2") into retrofit filter combinations (Converts 63 mm hole centres to 45 mm hole centres)

Installation Example



Installation Guidelines

- Install in horizontal or vertical pipework with filter bowl downwards
 - This position ensures optimum filter efficiency
- Install shutoff valves
 - Pressure gauge can be read off easily
 - Degree of contamination can be seen with clear filter bowl
 - Simplifies maintenance and inspection
- The installation location should be protected against frost
- Fit immediately after water meter
 - Corresponds to DIN 1988, Part 2

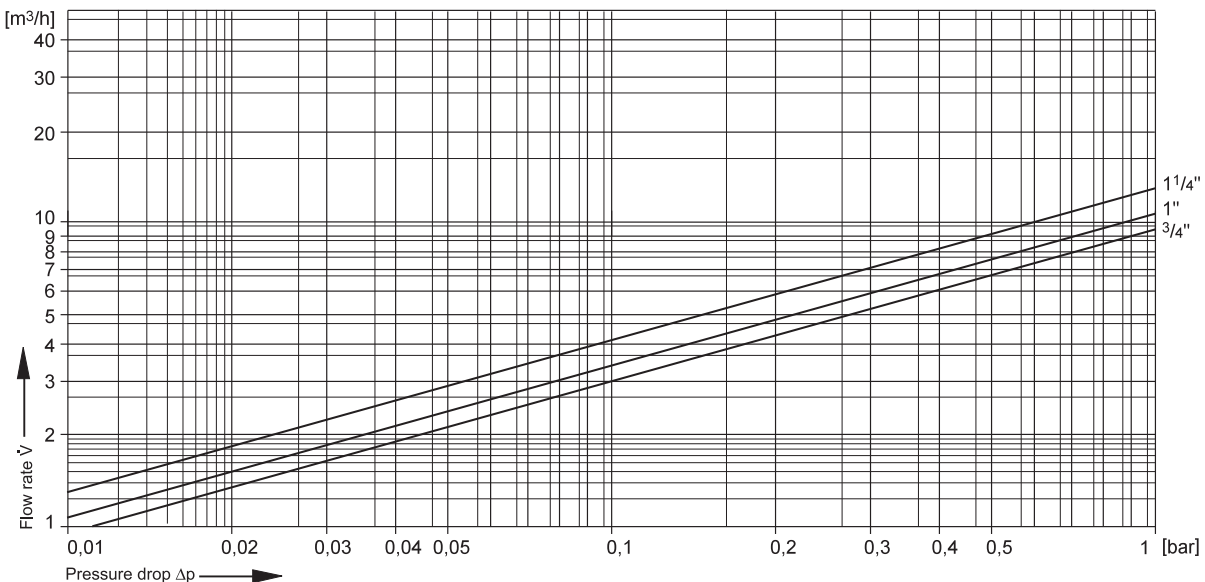
Typical Applications

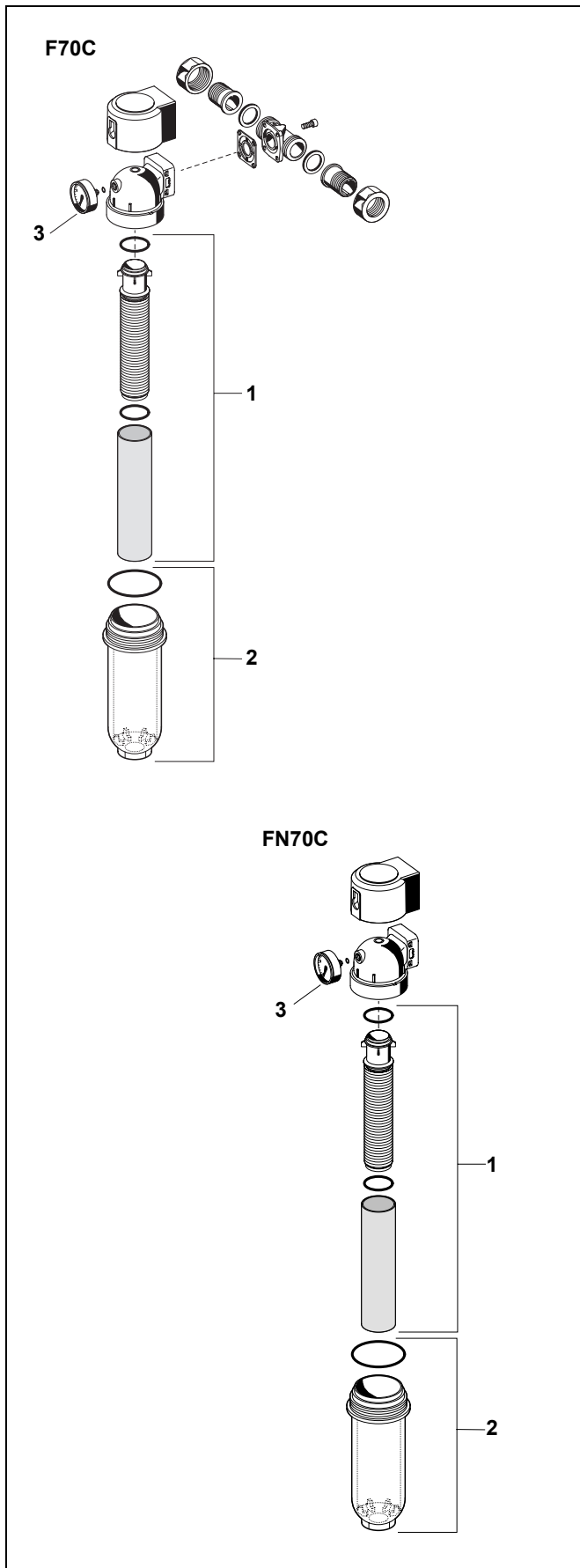
Fine filters of this type are suitable for supplies to buildings of all types. They can also be used for commercial and industrial applications within the limits of their specifications.

Fine filters of this type are installed:

- Where there is existing metal or plastics pipework
- If the downstream system includes appliances which must be protected against dirt
- For installation in horizontal or vertical pipework
- Where space is limited

Flow Diagram





Spare Parts

F70C/FN70C Fine Filters (From 2003 onwards)

No.	Description	Dimension	Part No.
1	Filter insert complete Filter mesh 100 µm	3/4" - 1 1/4"	AF70-1A
2	Clear filter bowl complete	3/4" - 1 1/4"	KF70-1A
3	Pressure gauge (0 - 16 bar)		M07M-A16
4	Double ring wrench for removing filter bowl (no fig.)	3/4" - 1 1/4"	ZR10K-3/4



Western Region
(08) 9412 6100
hydramet@hydramet.com.au

Central Region
(08) 8374 7800
hydrasa@hydramet.com.au

Eastern Region
(03) 9325 3900
hydravic@hydramet.com.au

www.hydramet.com.au