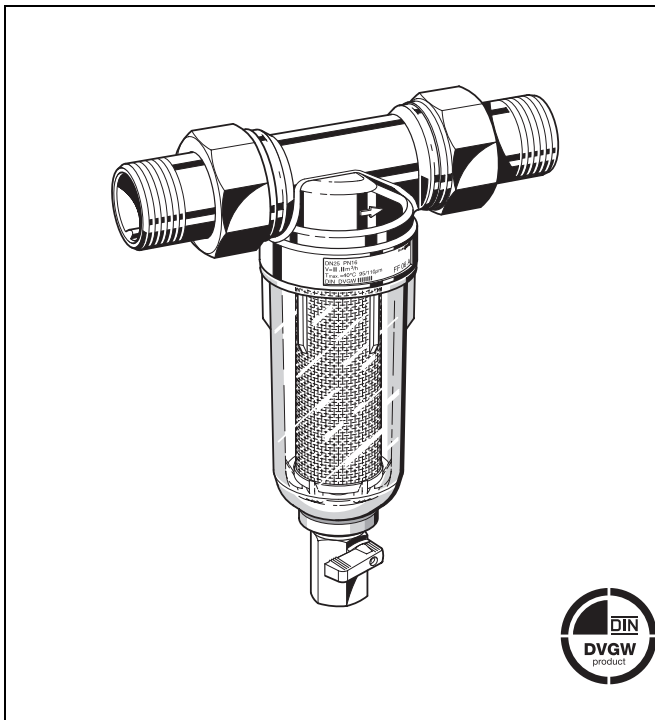


MiniPlus FF06

Rinsable fine filter

Product specification sheet



Construction

The fine filter comprises:

- Housing with female and male threads
- Threaded connections (version AA)
- Fine filter in clear filter bowl
- Ball valve
- Double wing wrench

Materials

- Body of dezincification resistant pressed brass
- Brass threaded connections
- Stainless steel fine filter
- Shock-resistant, clear transparent synthetic material filter bowl

Application

Rinsable MiniPlus FF06 fine filters ensure a continuous supply of filtered water. The fine filter stops the flow of particulates, for example rust particles, strands of hemp, or grains of sand. Sediment collected at the bottom of the filter bowl can simply be removed by rinsing the filter.

Compact in size, these filters were designed to fit where space is limited.

Special Features

- DIN/DVGW approved
- Simple assembly
- Filtered water supply even during rinsing
- Shock resistant clear synthetic material filter bowl enables easy checking of filter contamination
- Filter and complete filter bowl are replaceable
- Body with female and male threads
- Meets KTW recommendations for potable water

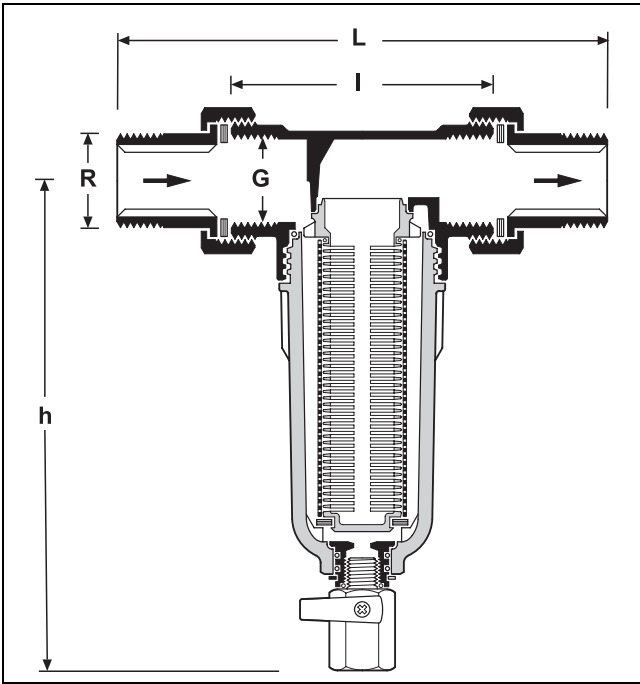
Range of Application

Medium Water

The filter is constructed for drinking water installations. In case of a process water application the filter has to be proven individually.

Technical Data

Installation position	Horizontal with filter bowl downwards
Operating pressure	Maximum 16.0 bar
Operating temperature	Maximum 40 °C
Connection size	1/2", 3/4", 1", 1 1/4"



Method of Operation

The MiniPlus fine filter is composed of a body and a rinsable fine filter insert.

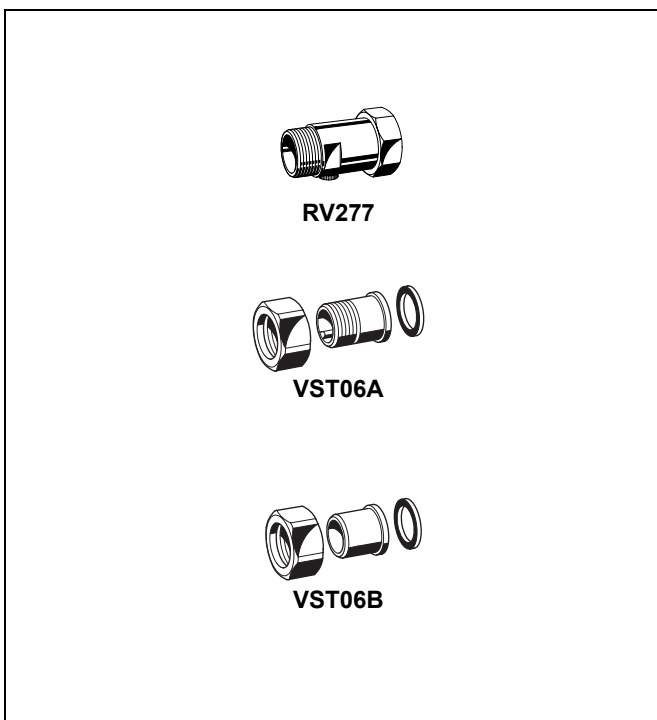
During normal operation, water flows through the filter mesh to the body outlet. To rinse the filter, the ball valve is opened which discharges the dirt particles. A continuous supply of filtered water is available also during the rinse cycle.

Options

FF06-...AA = Threaded male connections, filter mesh size 100 µm

FF06-...EA = Without connections, filter mesh size 100 µm
 Connection size

Connection size	R	1/2"	3/4"	1"	1 1/4"
Internal threads	G	1/2"	3/4"	1"	-
Weight	approx. kg	0.7	1.0	1.3	1.5
Dimensions	mm				
	L	140	158	179	197
	I	80	90	100	105
	h	158	180	180	180
Flow value at Δp = 0.2 bar	m ³ /h	1.5	2.8	3.2	3.8
k _{VS} -value		3.3	6.3	7.2	8.5
DVGW-Approval No.		NW-9301 AT 2530			-



Accessories

RV277 Inlet check valve

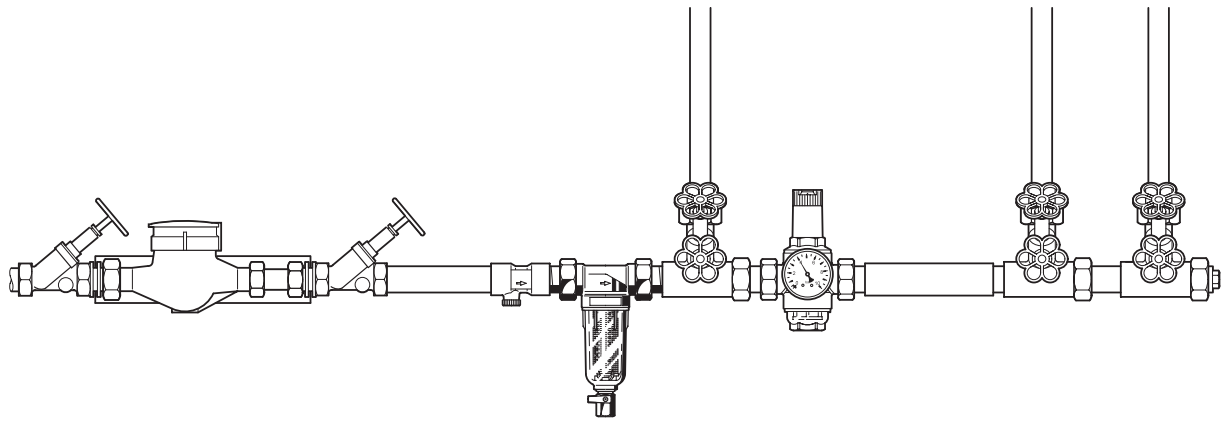
Available in sizes R 1/2" - 2"

VST06 Connection set

Connection set

A = Threaded male connection;

B = Solder union connection

Installation Example**Installation Guidelines**

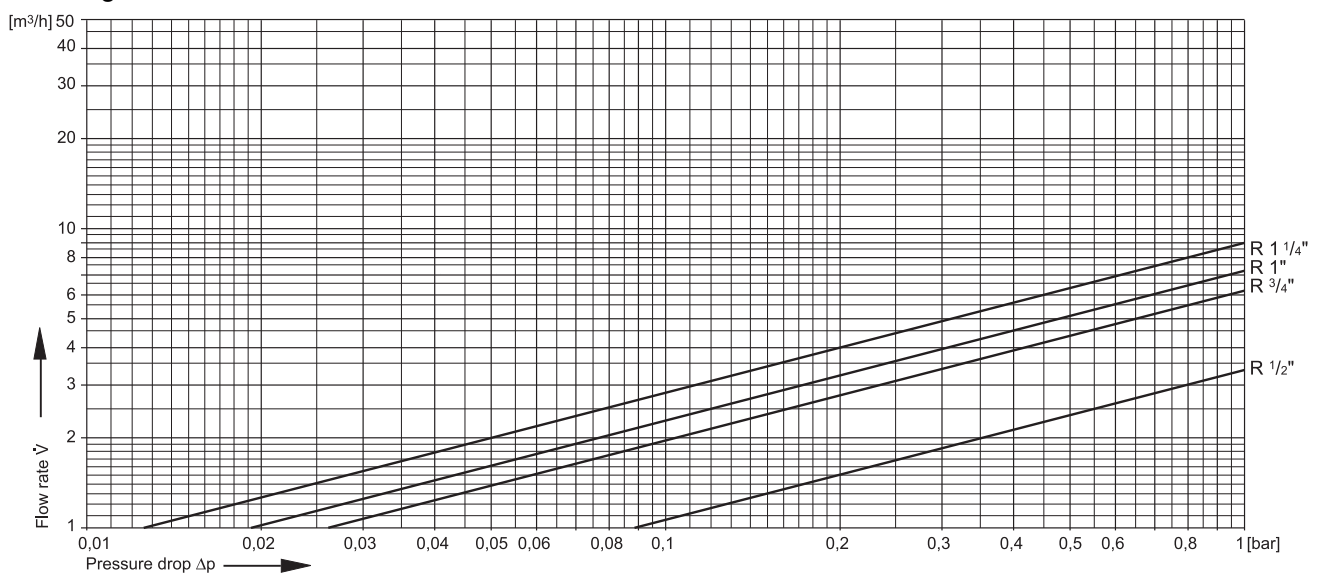
- Install in horizontal pipework with filter bowl downwards
 - This position ensures optimum filter efficiency
- Install shutoff valves
- Ensure good access
 - Degree of contamination can be seen with clear filter bowl
 - Simplifies maintenance and inspection
- The installation location should be protected against frost
- Fit immediately after water meter
 - Corresponds to DIN 1988, Part 2

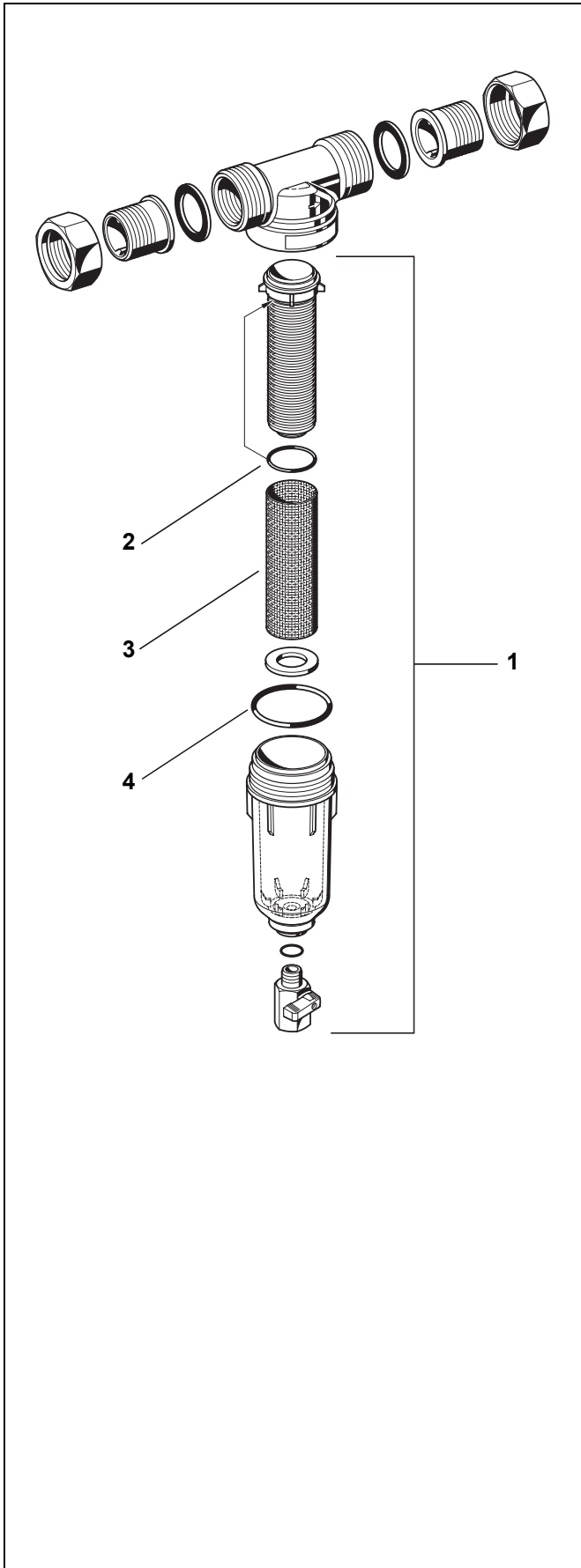
Typical Applications

Fine filters of this type are suitable for supplies to buildings of all types. They can also be used for commercial and industrial applications within the limits of their specifications.

Fine filters of this type are installed:

- If the downstream system includes appliances which must be protected against dirt
- Where no pressure reducing valve is required (maximum 5.0 bar static pressure)
- Where a pressure reducing valve is already fitted but cannot be retrofitted with a filter

Flow Diagram



Spare Parts

MiniPlus FF06 Fine Filters (From 1997 onwards)

No.	Description	Dimension	Part No.
1	Clear filter bowl	1/2"	KF06-1/2A
	complete with sieve and mesh carrier	3/4" - 1 1/4"	KF06-1A
2	O-ring set for mesh carrier (pack of 10)	1/2"	0903127
		3/4" - 1 1/4"	0903128
3	Replacement sieve	1/2"	AS06-1/2A
		3/4" - 1 1/4"	AS06-1A
4	O-ring set for filter bowl (pack of 10)	1/2"	0901246
		3/4" - 1 1/4"	0901499
5	Double ring wrench For removing filter bowl (no fig.)	1/2" - 1 1/4"	ZR06F



Western Region
 (08) 9412 6100
 hydramet@hydramet.com.au

Central Region
 (08) 8374 7800
 hydrasa@hydramet.com.au

Eastern Region
 (03) 9325 3900
 hydramet@hydramet.com.au

www.hydramet.com.au